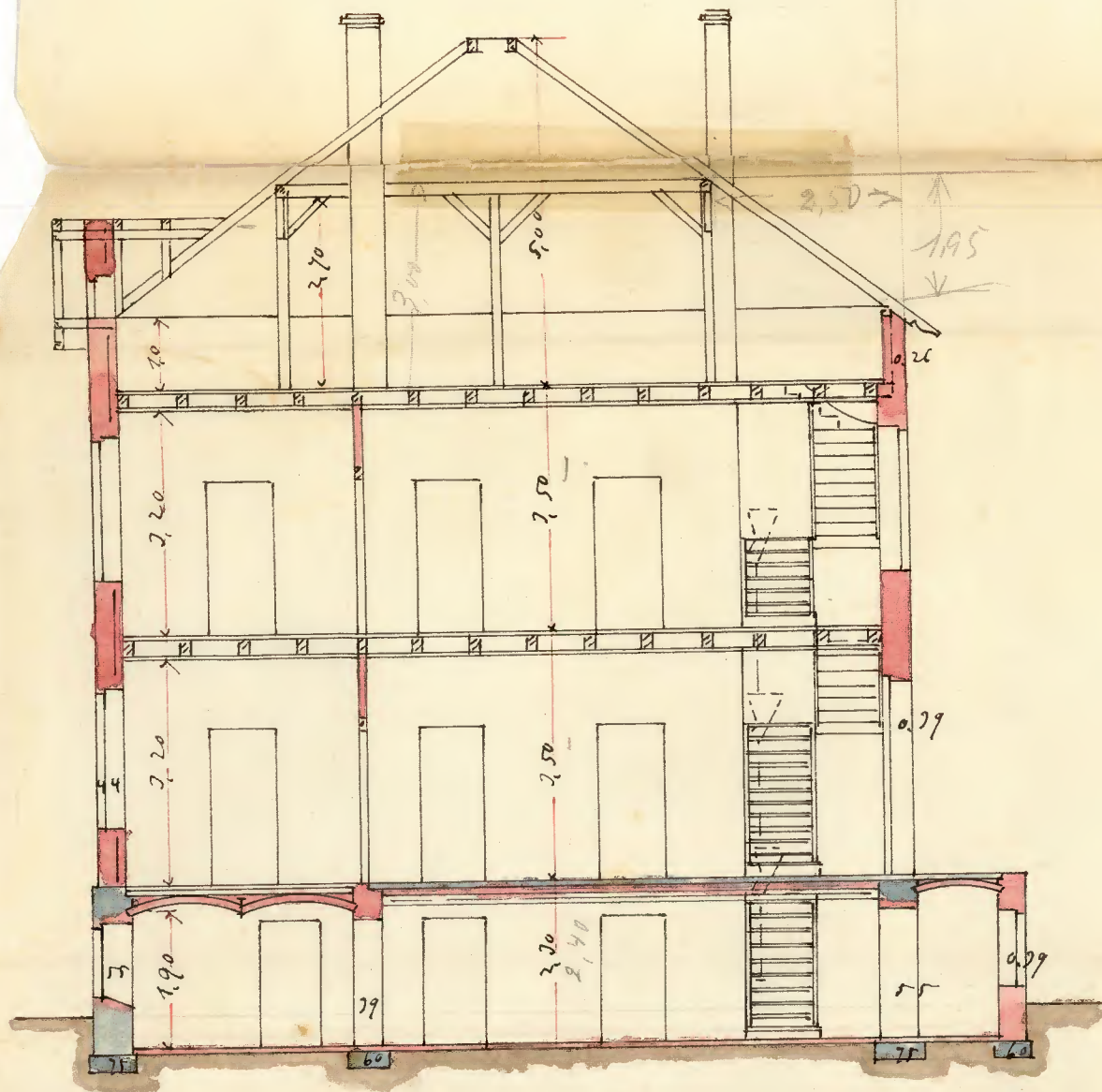
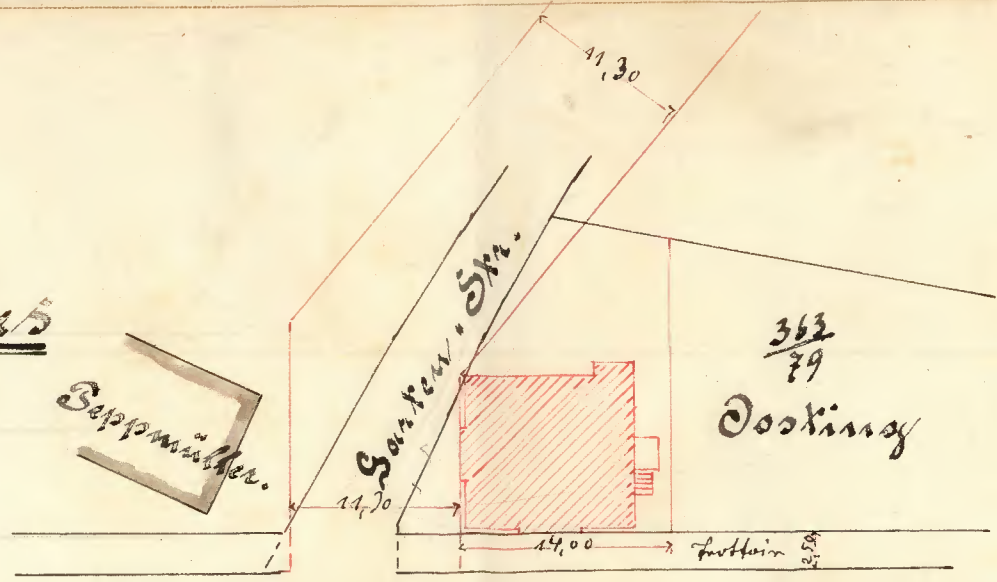


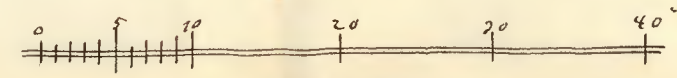
Projekt zum Neubau eines Wohnhauses  
für Maurermeister S. Gejner  
Bischfeld, Wiesenstr. 1.



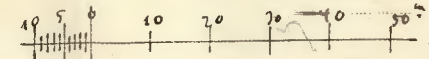
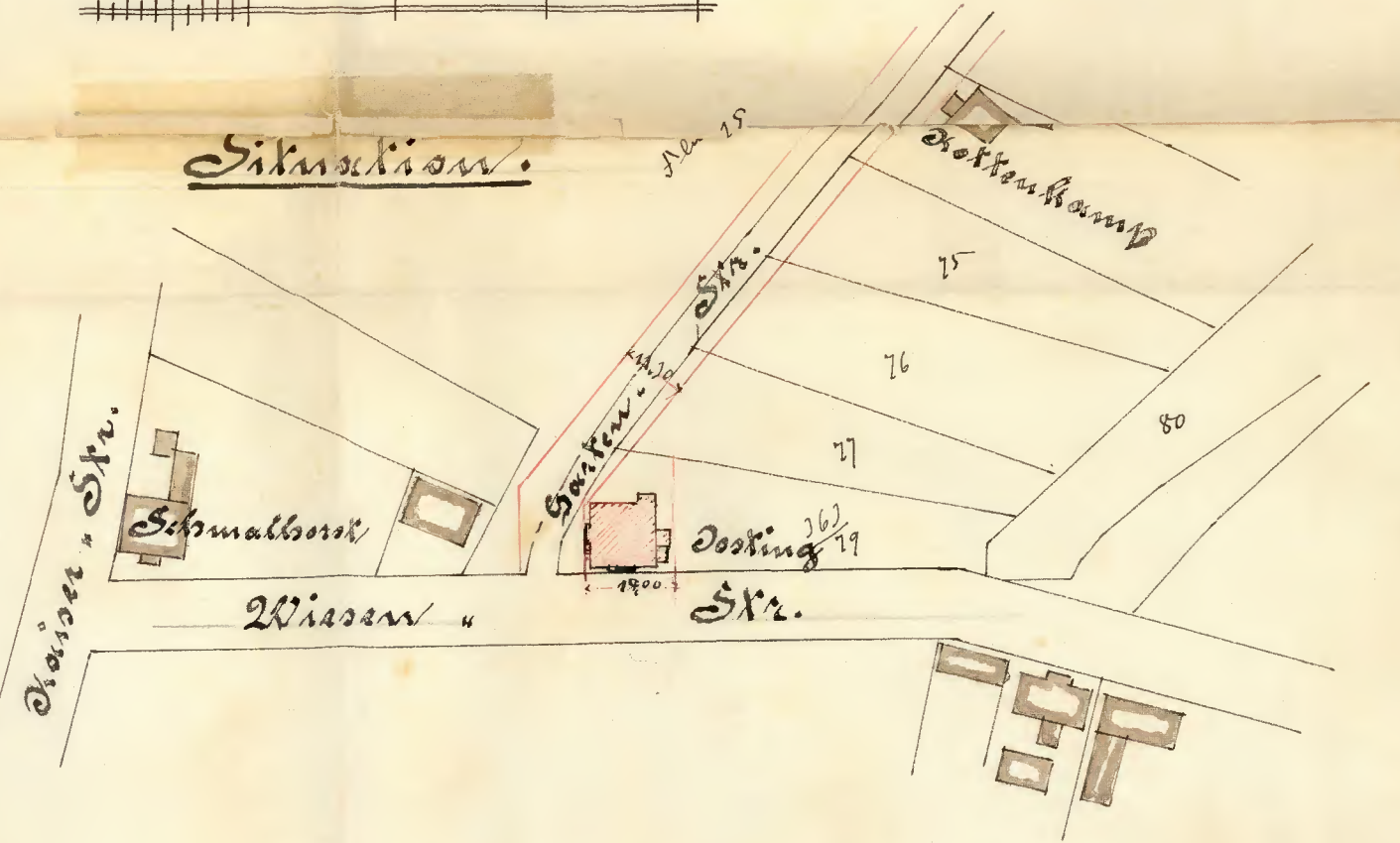
Schnitt: a-b.



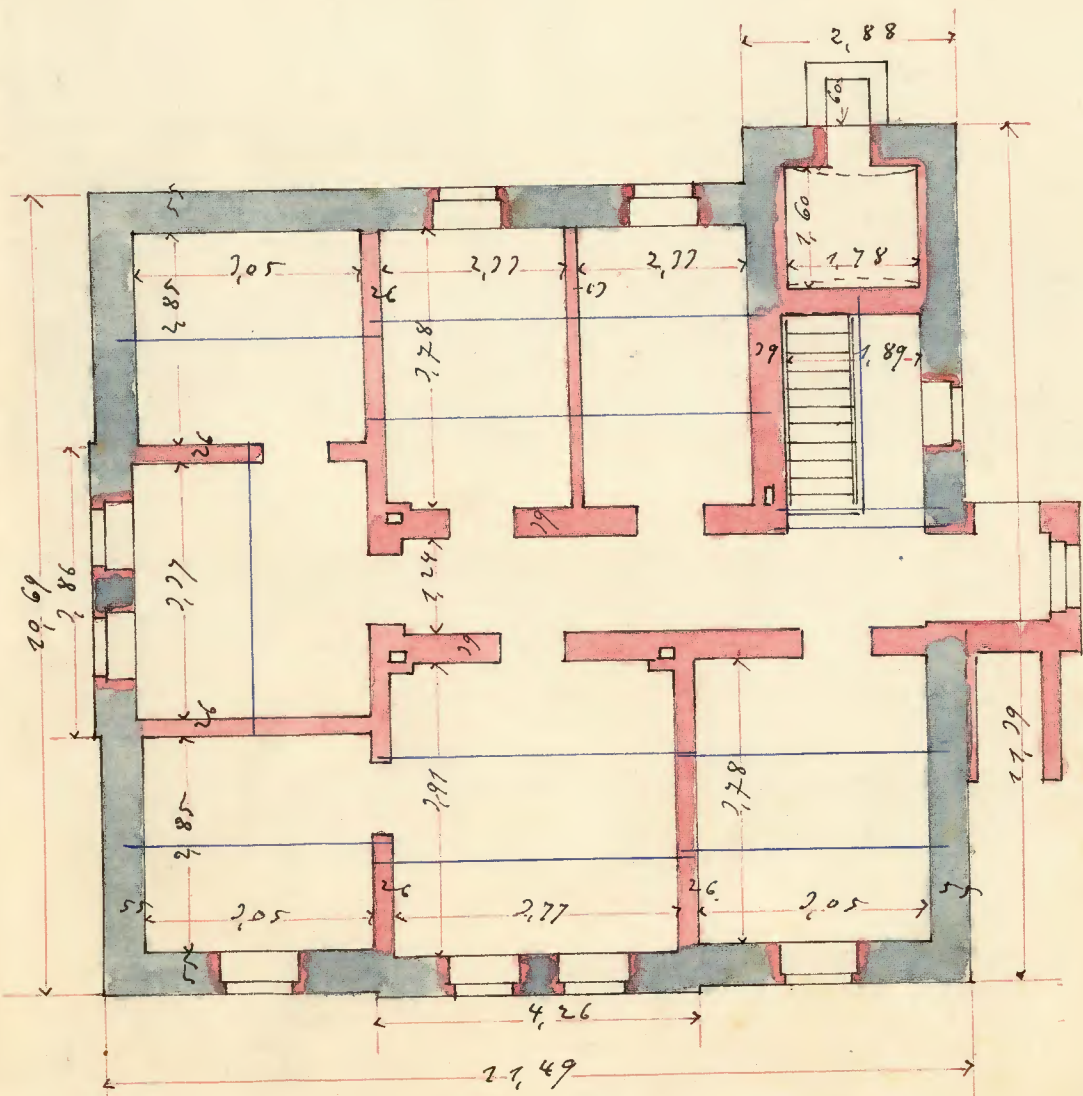
Aussicht.



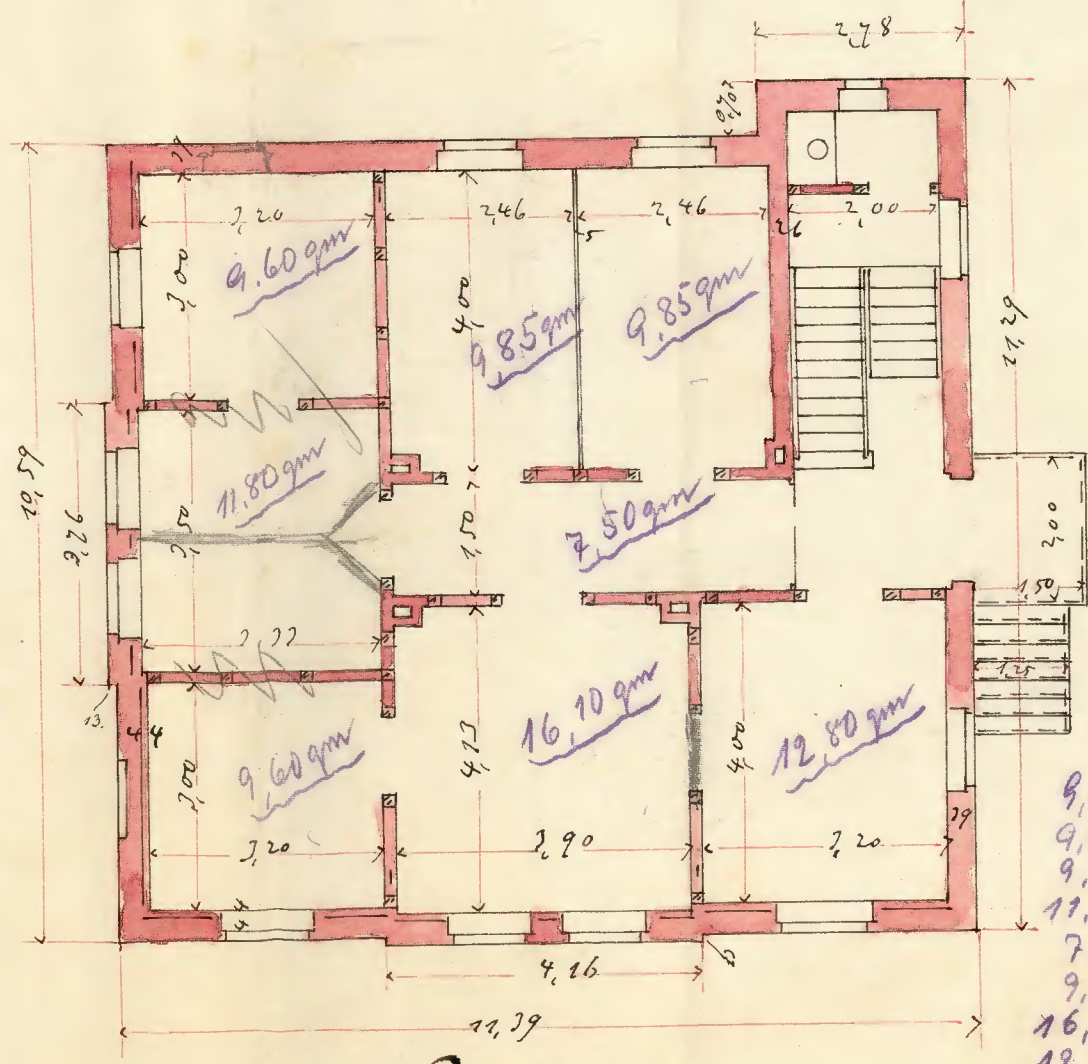
Situation.



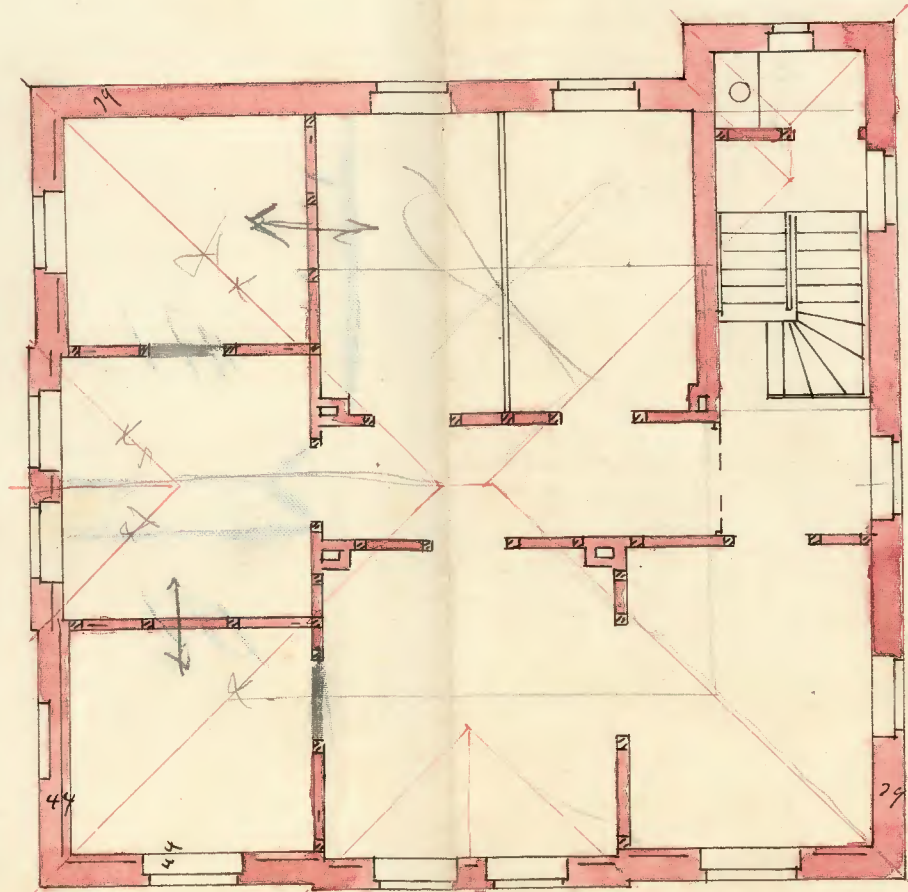
Revisiert  
 Bischfeld 3/5, 1890.  
 Strauch,  
 Archt.



Soukterrain.



Soukerra.



Etage.

9.60 qm  
 9.85 n  
 9.85 n  
 11.80 n  
 7.50 n  
 9.60 n  
 16.70 n  
 12.80 n

mit 87.70 qm Dachfläche  
 im Fund = 0.00 qm  
 Dachhöhe 87.70 - (2.9.85 + 7.50) = 60.00 qm



Bischfeld, den 26. April 1890  
 S. Gejner  
 Maurermeister.

267 Ia

